

Automatic Pressure Controller & Float Switch

Automatic Pressure Controller TECH-APC02



Rated voltage	220V-240V
Frequency	50/60HZ
Max using current/max power	30A/2.2KW
Starting pressure setting	1.0-3.5BAR
Max working pressure	10BAR
Connection thread	Inlet male thread G2"
	Outlet male thread G2"
Protection rating	IP65
Max working temperature	60°C
Cable	25CM for power & 40CM for motor

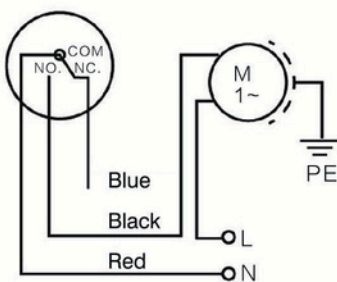
Float Switch TECH-FS03/FS05



Rated voltage	110V/220V
Frequency	50/60Hz
Rated Current	16 (4) A
Protection grade	IP68
Maximum operating temperature	55°C
Cable	3 mtr / 5 mtr

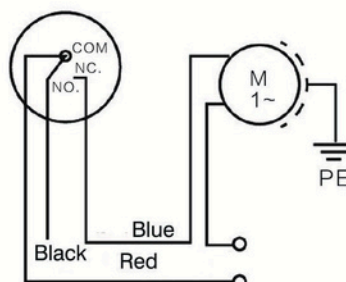
Description

Auto- fill-water modes



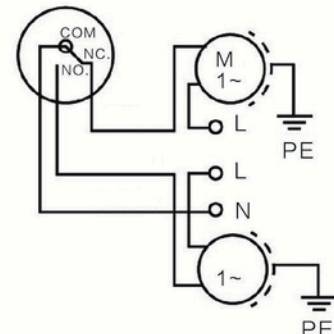
connect the control's blue line to electric pump, black line is connected to zero line, black, brown line can not be connected and should be insulated.

Auto-grainage-and-lack-water protection modes



connect the control's brown line to electric pump, the black line is connected to zero line, the blue line can not be connected and should be insulated.

Fill-water and drainage auto-switch modes



the chart is fill-water and drainage auto-switch mode, this electric connection chart synthesize by automatic fill water and auto-drainage.